

Bob Guarnieri

SPORTS RACING

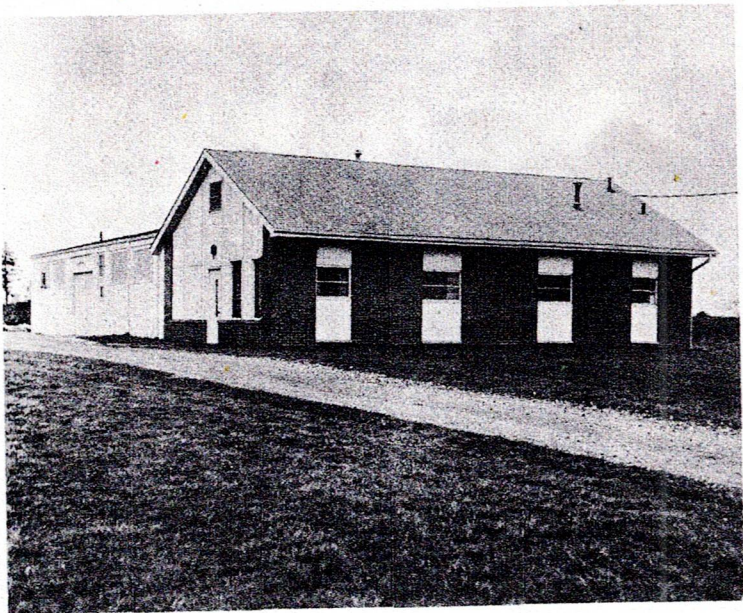
A CATAGORY TO CONSIDER

some facts & observations



Vanguard

AUTOMOTIVE ENTERPRISES INC.



Pictured above is the home of Vanguard Automotive Enterprises, Inc. where for many years Bobsy racing cars have been manufactured. This 5000 sq. ft. shop is used solely for the fabrication and maintenance of racing cars. An engine rebuilding area, dyno room, alignment area and complete machine shop are all housed within this building.

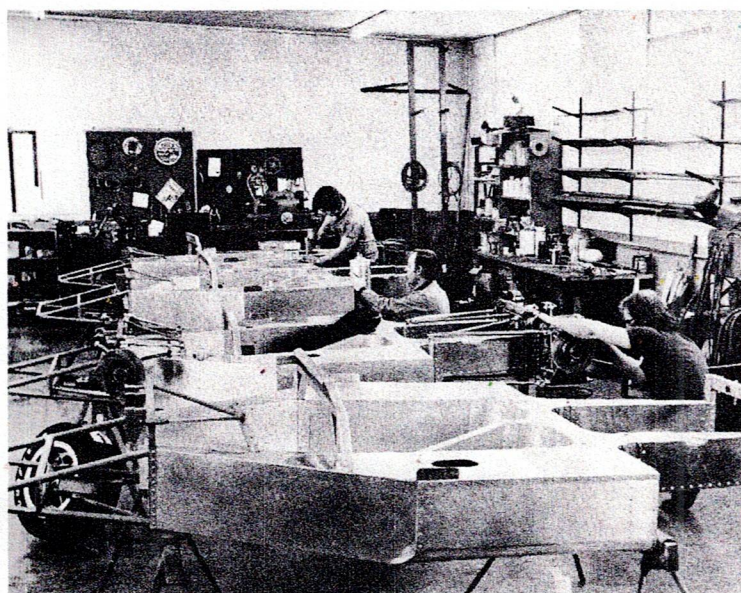
The shop is located on Ohio State route 18 on the western outskirts of Medina, the street address being 942 W. Liberty (SR18).

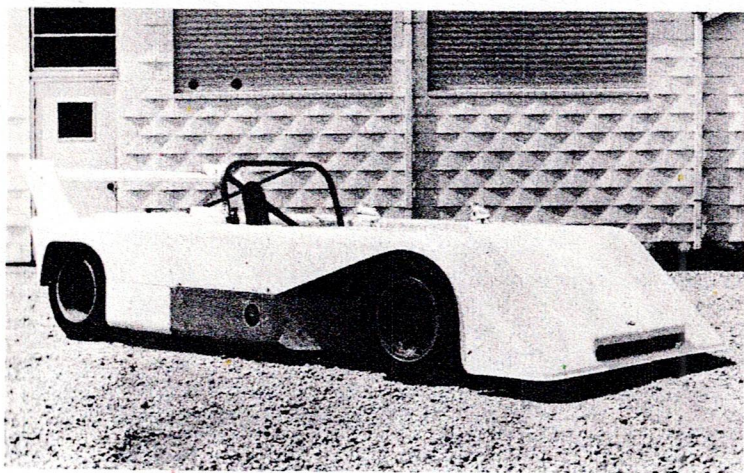
Customer visits are welcome anytime. The city of Medina is located just 25 miles south of Cleveland Hopkins airport and is only 17 miles south of the Ohio Turnpike or 3 miles west of Interstate 71.

This interior view of the shop shows some of the machinery and equipment used for construction & servicing of racing cars.

Vanguard Automotive has been in the full time business of building racing cars since 1962 making it possibly one of the oldest and most experienced constructors in the country. The initial SR2 model was an aluminum tube frame design of which some 60 units were built. Over the years Vanguard has built in quantity Formula Vee's Formula Ford, DSR, CSR and BSR cars.

Currently we are offering the monocoque SR6 design for C & DSR. These cars are constructed in limited quantity and only during the winter months as we normally become involved in servicing and repairing cars during the racing season.





The SR6 pictured above is the latest in our series of sports racing designs.

The SR6 design is unique in that it incorporates a variable rate of suspension setup at the rear, which permits the use of a fairly low rate spring, giving the car good stability at speed along with excellent control of the chassis over severe track elevation changes as well as a progressive build up of roll stiffness. Varying fuel loads and driver weight have little effect upon chassis height. An additional benefit of the variable rate suspension is maintenance of rear chassis height as the aerodynamic wing loadings increase with speed.

The average SR6 when setup with a 1300 BDA and MK8 hewland gearbox will weigh 1000 lbs. which is the desired design weight of the car. At this weight, tire loading problems on slow turns which are so common to very light weight SR cars cease to be a problem for the SR6.

The SR6 design has been well tested over 3 seasons of racing and has proven to be a reliable and thoroughly competitive design. Constant updating of the design has resulted in a thoroughly developed car.

SPECIFICATIONS, BOBSY SR6 SPORTS RACING CAR

CHASSIS: Full length monocoque structure utilizing steel bulkheads & subframing. Rivited and bonded.

Torsional strength: 2,000 lbs. per degree overall between front and rear bulkheads determined by physical test.

WEIGHT: Total car weight, dry, with 1300 BDA and MK8 Hewland fitted. 1,000 lbs.

BODY: Hand lay up, color impregnated fiberglass. Available in various colors.

weight, 65 lbs.

Fully aerodynamically loaded with adjustable rear airfoil.

SUSPENSION: Cast magnesium uprights, front and rear. Adjustable for caster, camber, toe, bump steer & roll stiffness.

Variable rate design at rear.

Shock absorbers adjustable for dampening and chassis height.

STEERING: Rack & pinion.

BRAKES: 9¼" disc brakes using light alloy quick changes calipers, dual master cylinders. Adjustable for front-rear bias. Stainless/teflon aeroquip brake line through-out.

* 10" diameter disc, 4 piston calipher front brakes available at extra cost.

WHEELS: 2 piece design utilizing a cast magnesium spoked inner half and 6061-T6 spun alum outer half.

Rear 10" x 13, weight 10 lbs.

Front 8" x 13, weight 8 lbs.

FUEL TANK: S.C.C.A. approved Firestone Race Safe Fuel Cell incorporated into monocoque, 11 gallon capacity. Additional capacities available.

COOLING SYSTEM: Front mounted cross flow radiator of Vanguard (manufacturer).

OIL SYSTEM: Deep aluminum cylindrical tank with air separator baffle and vent.

Average system capacity—8 quarts

Full flow side mounted oil filter

Oil cooler—rear mounted BMC Aluminum

ELECTRICAL SYSTEM: Front mounted & covered wet battery.

Full instrumentation with circuit breakers.

SAFETY EQUIPMENT: Approved S.C.C.A. full width roll bar with fore/aft diagonal bracing.

Seat belts, shoulder harness and anti-submarine belts, fire extinguisher.

DIMENSIONS:

O.A. Length	12'
O.A. Width	63"
Wheelbase	93½"

Normally new SR6 chassis are constructed in limited quantities during the winter months (Nov. thru March) and are finished and ready for delivery during March or May in time for the coming racing season.

A minimum \$3500 deposit is required when placing an order for a new SR6 with the balance due upon completion. In the event we are to supply such major components as the engine or gearbox these items will be paid for before being ordered from our source. The price quoted below is for a complete rolling chassis equipped as indicated and with Goodyear racing tires fitted. We are always happy to make final engine installation and will normally charge \$200 to \$350 for this service depending on the complexity of the installation.

The car is also available as a completely fabricated but disassembled kit not including tires, battery, gauges etc., at approximately \$1500 less than the current rolling chassis price.

ITEMS INCLUDED IN CHASSIS PRICE.

- * Seat belts, shoulder harness, anti-submarine belt.
- * Oil cooler, Oil tank, Oil filter.
- * Fuel pump, ignition coil, full instruments.
- * Half shafts, Leather rim steering wheel.
- * A completely aligned & bump steered chassis.

ROLLING CHASSIS, CURRENT PRICE

7895⁰⁰